

Installation Specifications

CSI – 3 Part Spec available at www.CORONADO.com/ArchitecturalResources

Choices Specific to Colosseum Travertine

- Standard Colors:** Black Forest, Roman, Mushroom. Custom colors may be available for an upcharge.
- Grout Joint Width:** ¼" Grout Joint (nominal)
- Grouting Options:** Full Smooth Tooled
- Grout Joint Color:** Natural Grey, Cream, Natural Off-White or Complementary Color
- Accessories:** Corners, Keystones, Trim Stones, Wall Caps, Post Caps and more. (See Accessories section of binder)

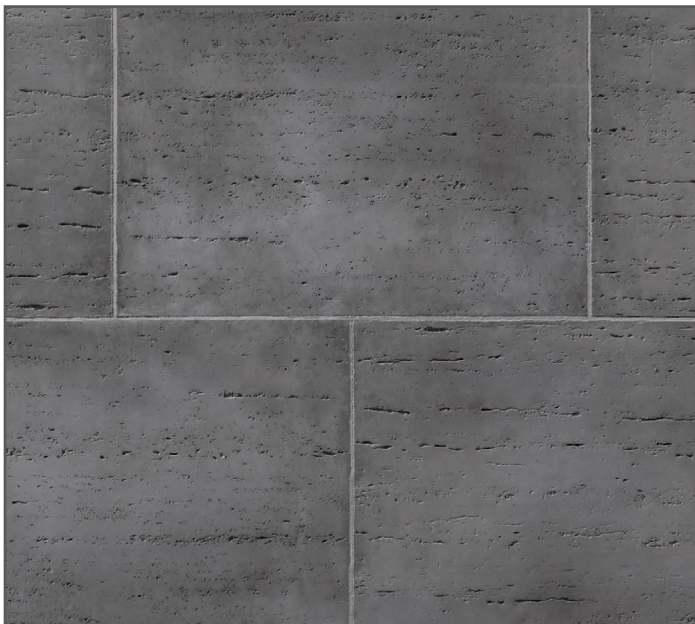
Special Installation Notes

- Pattern:** Blend the stone on the wall from several different boxes to ensure proper color. *Due to the large profile of the Colosseum Travertine, Coronado recommends selecting an installer that has previous experience with precast or large tile installations. See catalog photos for recommended installation pattern.*
- Chalk Lines:** Should be used by installer to ensure a straight and level pattern.
- Sealing:** Not required. However, if installed on an exterior exposed to excessive water from runoff or improper drainage, we suggest the product be sealed in that particular area to protect it from staining or spalling during freeze-thaw cycles.
- Freeze-Thaw:** When installing stone in a freeze-thaw environment, extra care should be taken to ensure a full coverage of mortar on the back of each stone, which will prevent water pooling behind the stone after it has been installed.
- Installation Info:** Download Coronado's latest Classic Series installation instructions at www.coronado.com for information on mortar and installation recommendations.

Profile Properties

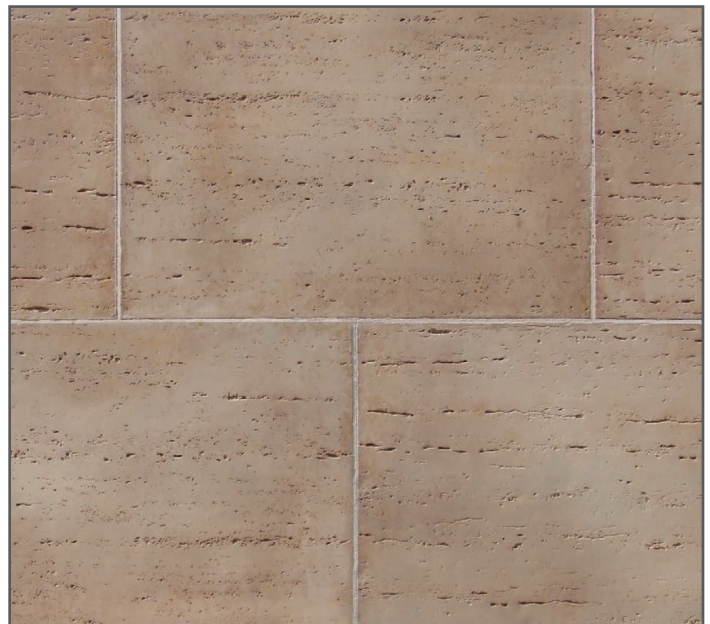
- Size:** Stone size is 16" in height and 24" in length. Corner returns are 3" for the short return and 15" for the long return (nominal). Contact Coronado for additional sizing.
- Thickness:** 1" (nominal).
- Weight:** 7 to 10 lbs. per square foot.
- Packaging:** Product sold by the piece.

¼" Full Smooth Tooled Grout Joint (nominal)



COLOSSEUM TRAVERTINE COLOR: BLACK FOREST

¼" Full Smooth Tooled Grout Joint (nominal)



COLOSSEUM TRAVERTINE COLOR: ROMAN